



**Deloitte.**



Insights2Action™ by Deloitte

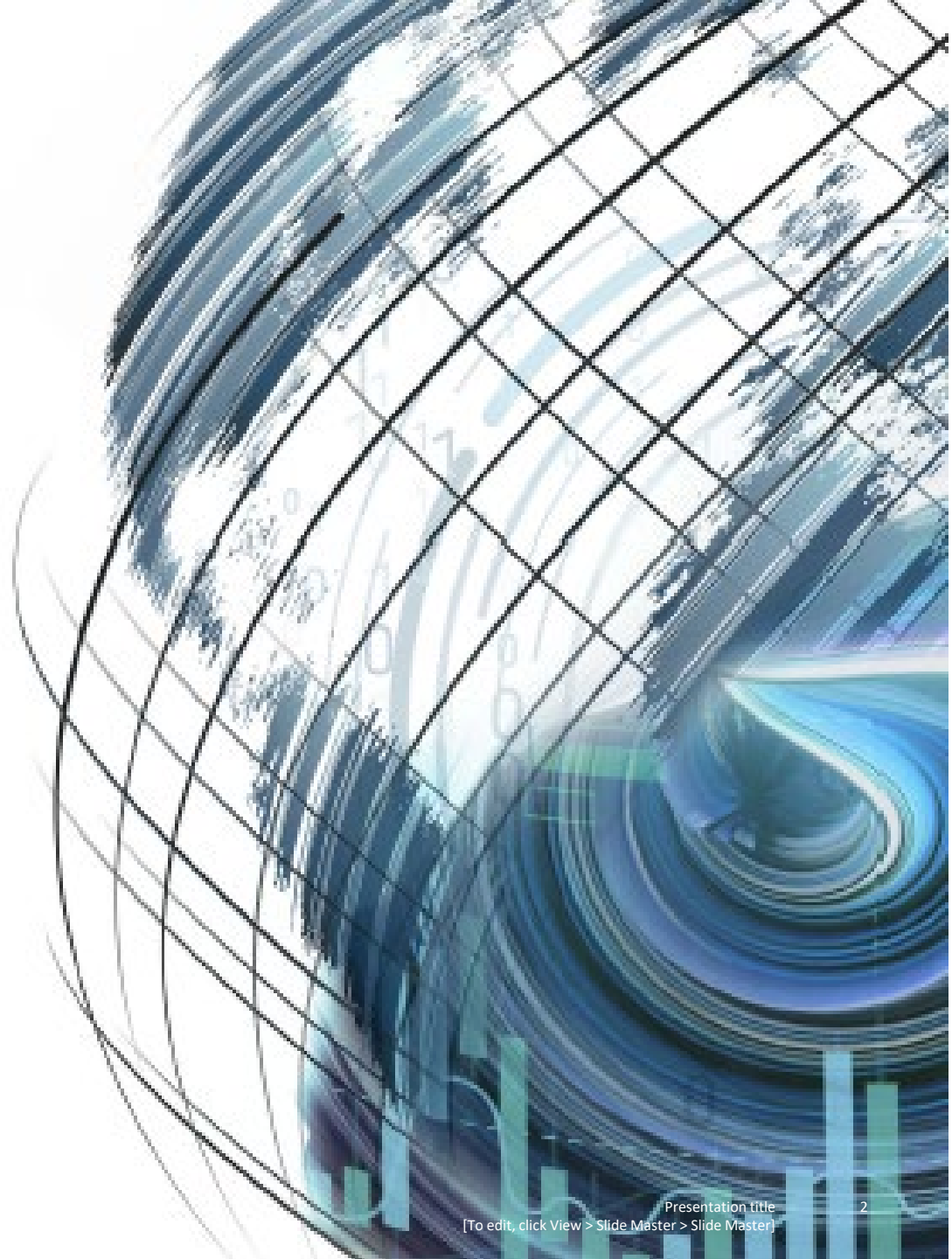
**Making sense of the human side of business**



Human Capital Research & Sensing is retiring  
Coming January 2022

# Insights2Action™

Action.Deloitte.com





# What is Insights2Action™ and what do we do?

Think “human capital decision intelligence”

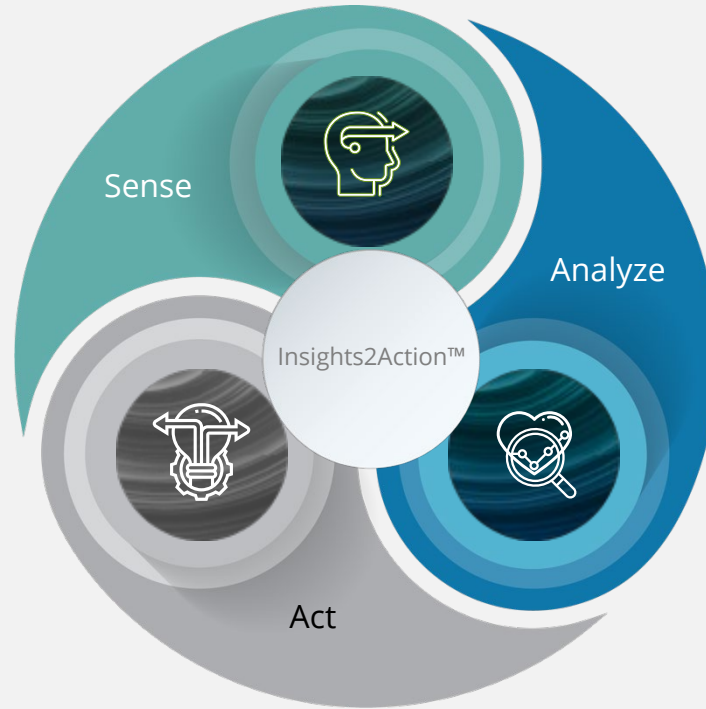


To thrive in an unpredictable world, organizations must continuously sense, evaluate, and act on challenges arising at the intersection of the workforce, the workplace and work itself.

With Insights2Action™, you can...

**Cut through noise** and distractions with evidence-based tools and practical guidance to bring meaning, purpose, and clarity to your people - and work-related strategies.

**Stay ahead of disruption** with daily, forward-looking insights and research-backed perspectives on the issues emerging at the heart of human capital and industry.



**Reduce uncertainty and improve decision quality** in service of the outcomes critical for your business and for your people.

## Capabilities



Data/research-based and community validated insights and content



Fully accessible, dynamic, fit-for-purpose platform free for everyone



Global, industry-specific market intelligence, backed by a community of thought leaders



Real-time, forward-looking practices, trends and insights



Personalized, scalable services to help you make better work, workforce, and workplace decisions

## Frequent Asked Questions

- **Will we have access to the Research & Sensing platform and content after December 31<sup>st</sup>, 2021?** You will not have the ability to login to the Research & Sensing platform or access Research & Sensing content after December 31<sup>st</sup>, 2021 (unless otherwise stated in your contract). However, the data and insights that make up the research from the Research & Sensing content is forever part of our “data lake” and we will continue to draw from them (in addition to leveraging all new data and insights that we are currently compiling for Insights2Action).
- **You mentioned that the Insights2Action platform was free. What does this mean exactly?** That’s right! Insights2Action is a completely free platform. No membership or fee is required to access or read the great content that will be available.
- **What services are available in the new model?** We are offering five core services in a fee-for-service model. These services include Commissioned Market Research, Advisory Support, Speaking Engagements, Guided Experiences and Diagnostic Assessments.
- **How do I find out more about the services offered in Insights2Action?** To find out more about Insights2Action services and prices, please reach out to your organization’s Program Manager.
- **Will I need a login to access and read articles found on Insights2Action?** A login is not required to access or read content on the Insights2Action platform. It is open universe. However, the platform will offer special functionality (e.g. curating and recommending content based upon your areas of interest and expertise and the ability to save and share articles) that will necessitate a user to create login credentials.
- **Will our Research & Sensing logins work for the Insights2Action platform?** Your Research & Sensing logins will not migrate over to the Insights2Action platform.
- **What topics will you cover in the new offering?** Think of Insights2Action as “Human Capital Decision Intelligence.” We will cover more than 34 topics in the new offering - some that you have come to know us well for, such as Leadership, Learning and Future of Work. We will also offer insights around new topics such as Cloud, Future of Mobility and Smart Cities.
- **Will you have industry-specific content on the Insights2Action platform?** We will! Industry has a significant impact on work, the workforce, and the workplace. We look forward to bringing insights forward at the intersection of industry.
- **What type of content will be available on the Insights2Action platform?** Most of the content on the Insights2Action platform will be in format of shorter form articles. The insights, practices and trends from these articles will be real-time and forward-looking.

- **Where do I find Maturity Models and Frameworks on the Insights2Action platform?** Maturity Models and Frameworks will not be available on the Insights2Action platform.
- **How often will you publish content on the Insights2Action platform?** We plan to publish anywhere from 3 to 5 insights *per day* on Insights2Action! There will be a lot of great content to check out.
- **Will Insights2Action offer Single Sign On (SSO)?** We are not offering SSO at this time. However, we may consider the possibility of providing some kind of company-specific SSO option in the future to further enable collaborative features. Stay tuned!