

# Welcome to Delta Dental!

University of California



# Delta Dental PPO™



# We've got you covered

## Delta Dental PPO

- Visit a PPO dentist to save the most.
- You can visit any licensed dentist.
- You won't be charged more than your expected share of the bill.
- You don't need an ID card to check in.
- We'll coordinate dual coverage.



# Delta Dental PPO

## Features and Benefits

- Deductible waived for diagnostic & preventive services.
- Orthodontic benefit for adults and dependent children. Subject to lifetime maximum limitations.
- Implant Coverage – The PPO plan includes a 50% implant benefit subject to the calendar year maximum.

Please consult the detailed plan highlights at [deltadentalins.com/uc](https://deltadentalins.com/uc)

# Tips to maximize your coverage



## **Delta Dental PPO**

The PPO network gives you the best savings. Visiting a PPO dentist gives you the highest level of coverage and helps keep your out-of-pocket costs as low as possible.



## **Delta Dental Premier®**

Visiting a Delta Dental Premier® dentist is a great alternative that still helps protect you from higher out-of-pocket costs. Your out-of-pocket cost may be higher than with a PPO dentist.



## **Non-Delta Dental**

Your out-of-pocket costs will be highest when using a non-Delta Dental dentist. Out-of-network dentists may bill you for the difference between their charges and what your plan pays (this is called balance billing).

# Check out the website

[deltadentalins.com/uc](https://deltadentalins.com/uc)



- Search for a network dentist in your area.
- Get answers to common questions about your dental plan.
- Read articles, browse recipes and watch videos about oral health and wellness.
- Information on our Virtual Dentistry tools.
- Information to file a claim when seeing a non-participating dentist.



# Sign up for an online account

Check your benefits information online

- Check your plan details: eligibility, covered services and level of benefits.
- Look up claim statements for recent dental visits.
- View or print your ID card.
- Estimate the cost of your next procedure.
- Submit questions to Customer Service.
- Get an email alert every time a new document is available and reduce paper.





# Contact Customer Service

Get help by phone or online

Call us toll-free at 800-777-5854

Speak to a Customer Service representative  
Monday through Friday, 8 am to 8 pm PST

For simple questions, use our automated  
phone system, available 24/7

Ask online: Go to [deltadentalins.com/uc](https://deltadentalins.com/uc) >  
Contact Us. Then follow the prompts or fill  
out the Customer Service Form.





# Pre-treatment estimate

It's easy to plan for dental expenses

1

Ask your dentist  
for an estimate



2

Dentist sends details  
to Delta Dental



3

You and your dentist  
receive a cost estimate



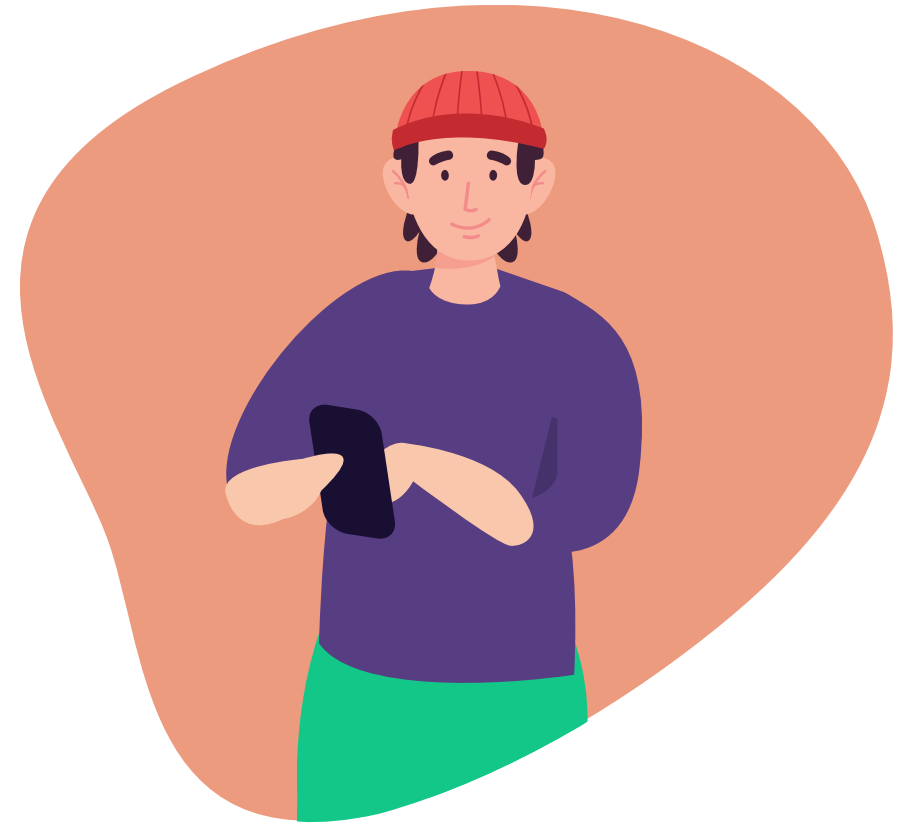
# Cost Estimator

Budget for dental expenses with personalized estimates

**Personalized.** Estimates are based on your benefits, including maximums and deductibles.

**Insightful.** Compare the cost of the same procedure at different dentists.

**Economical.** See how choosing an in-network dentist can help you save.



# Emergency coverage

- Visit any licensed dentist worldwide and receive benefits.
- Submit a claim for reimbursement.





DeltaCare<sup>®</sup> USA

# Comprehensive coverage

DeltaCare USA: a prepaid, fixed copayment plan



Once enrolled, select a primary dentist from the DeltaCare USA network to start enjoying:

- Set copays
- No annual maximums
- No deductibles
- No claims
- Low premiums



# How DeltaCare USA works

Getting dental care is easy

1



Choose a primary care dentist online or by phone

Make an appointment



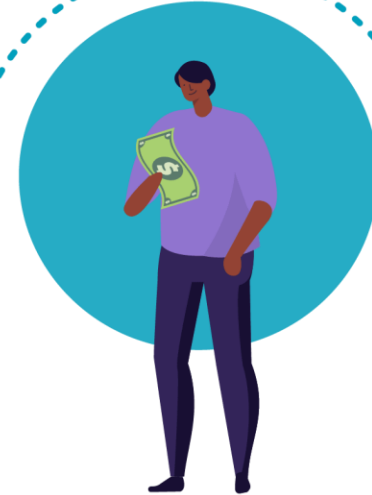
2

3



Visit the dentist

Pay your copayment (if any)



4

# Choosing your primary care dentist and securing specialty and emergency care

Your DeltaCare USA network access

Go to [deltadentalins.com/uc](https://deltadentalins.com/uc) to browse the DeltaCare USA dentists in your area.

Write down the facility number of the primary care dentist you would like.

## Submit your request

- Online: Create an online account at [deltadentalins.com/uc](https://deltadentalins.com/uc)
- By phone: Call Customer Service at **800-422-4234**

- If you need specialty care, your primary care dentist will refer you
- Your primary care dentist requests authorization for specialty services
- Plan includes out-of-network coverage only for emergencies



# Contact Customer Service

Get help by phone or online

Call us toll-free at **800-422-4234**.

Speak to a Customer Service representative Monday through Friday, 5 am to 6 pm PT.

For simple questions, use our automated phone system, available 24/7.

Ask online: Go to **[deltadentalins.com/uc](https://deltadentalins.com/uc)** > **Contact Us**. Then follow the prompts or fill out the Customer Service Form.



# Member support

Oral health and wellness education



## The whole tooth about a healthy smile:

Oct 22 - 11am PT /2pm ET  
Dec 17 - 10am PT /1pm ET



## Oral health and aging:

Nov 19 - 11am PT /2pm ET

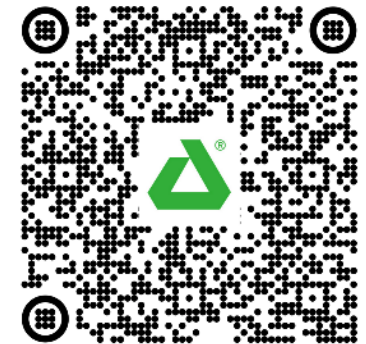
## Oral health webinars

Wellness education

Engaging sessions focused on preventive oral health care

- Understanding tooth decay
- Gum health: the foundation of your smile
- How oral health impacts overall health
- Oral health and aging

*98% of survey respondents say they will improve their oral health habits as a result of attending a webinar!*



Thank you!