



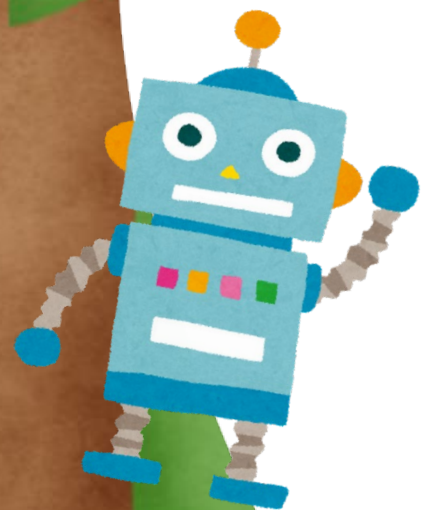
Center for Early Childhood Education

A Safe, Fun, and Nurturing Space for Your

Introduction

The Center for Early Childhood Education first broke ground in the late 90's with the building of the South Building. With such a strong interest in childcare, the decision was made to introduce a second building in the early 2000's.

The curriculum at the UCR Center for Early Childhood Education follows guidelines set by the California Department of Education and the National Association for the Education of Young Children. All of our programs are accredited by the National Academy of Early Childhood Programs.





Programs & Age Groups

Infant care (0-12 months)

Toddlers (12 - 24 months)

Two's (24 - 36 months)

Preschoolers (3-5 years)

Kinder Prep (4-5 years)

Daily Schedule

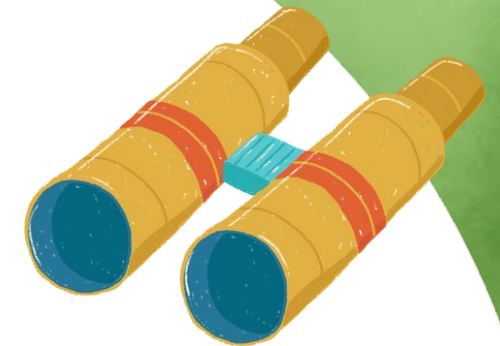
- Arrival & Morning Activities
- Breakfast Time
- Learning & Playtime
- Lunch & Nap Time
- Afternoon Snack
- Afternoon Activities





Learning & Development

The Creative Curriculum gives teachers a framework to provide children with developmentally appropriate care and instruction. This approach suggests that children learn best through hands-on interactions in a well-organized environment. The Creative Curriculum gives emphasis to the different learning areas throughout the classroom. Classroom arrangement has a huge impact on how children learn and as a result, teachers organize materials/equipment in separate interest areas.





Safety & Hygiene Measures

Safety standards are set and monitored by the University Health and Safety Department, the Campus Fire Marshall, Riverside County Department of Social Services (licensing) and the California Department of Education Child Development Division

Maintaining the health and safety of children, families and staff is a primary goal of our program. Staff will conduct visual health screenings upon arrival, as well as practice hand washing hygiene, toilet practices, and strict health policies to ensure the health and safety of all children.

Fun Activities for Kids



Arts & crafts



STEAM Activities



Outdoor play & exercise





Meals & Nutrition



Healthy

UCR participates in the California Adult Child Food Program (CACFP). The nutrition program ensure that children are being served healthy well-balanced meals and snacks

Balanced Meals

Meals and snacks are served family style to help children develop selfhelp skills and to foster independence. Mealtimes are also a time for children to learn appropriate manners, social skills and expand their vocabularies through informal conversations with teachers and peers



Snacks

Menus are posted monthly. Menus are planned with guidelines from the CACFP, and screened by a Nutritionist to ensure compliance.



Parent Involvement

We have activities throughout the year in which parents are encouraged to participate in classroom activities, as well as activities for parents to get to speak to one another.

The Parent Advisory Committee (PAC) serves as a vital bridge between families and the school community. Made up of engaged parents and guardians, the PAC collaborates with school leadership to provide input on policies, programs, and initiatives that impact students' learning experiences



Enrollment & Fees

SCHEDULE	STUDENT SUBSIDIZED FEE	UCR STAFF & FACULTY FEE	COMMUNITY FEE
INFANT PROGRAM			
5 Days M-F	\$1,195 monthly	\$1,805 monthly	\$2,150 monthly
TODDLER PROGRAM			
5 Days M-F	\$1,135 monthly	\$1,695 monthly	\$2,075 monthly
PRESCHOOL PROGRAM			
5 Days M-F	\$850 monthly	\$1,145 monthly	\$1,440 monthly
3 Days MWF	\$570 monthly	\$760 monthly	\$925 monthly
2 Days TR	\$400 monthly	\$530 monthly	\$635 monthly
KINDERGARTEN PROGRAM (5 YEARS BY SEPTEMBER 1ST)			
Enrichment Program (M-F Full Day 7:30-5:30)	\$1,080 monthly	\$1,080 monthly	\$1,400 monthly
Kinder Academy (M-F School Day 7:30-2:30)	\$810 monthly	\$810 monthly	\$1,045 monthly

For more information on Tuition-Assistance Programs,
please contact 951-827-7454



Contact Us

-  951-827-7454
-  www.cece.ucr.edu
-  ecs@ucr.edu
-  3333 Watkins Drive
Riverside CA, 92507
Lot 28 and Lot 29

